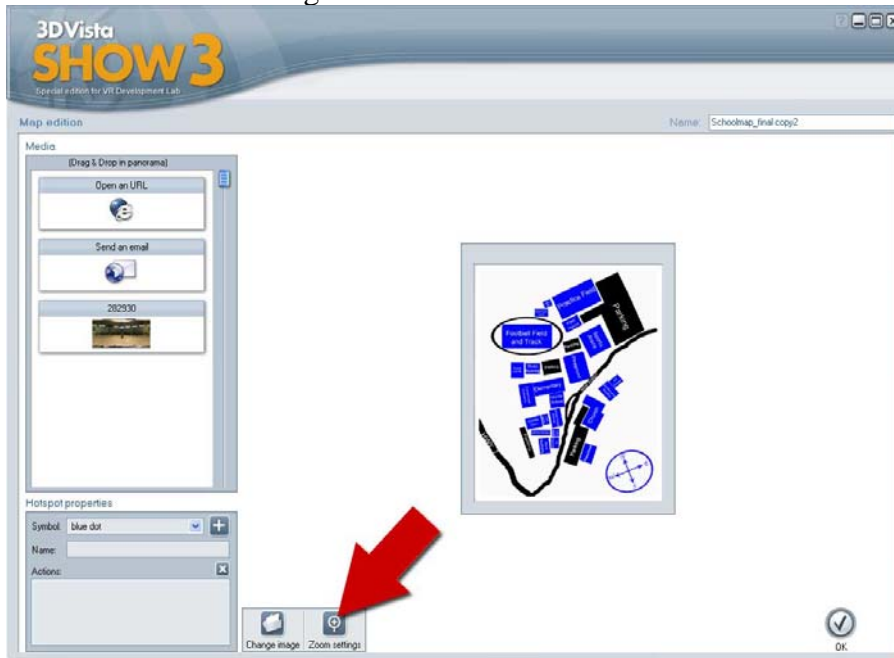


Changing Zoom Settings

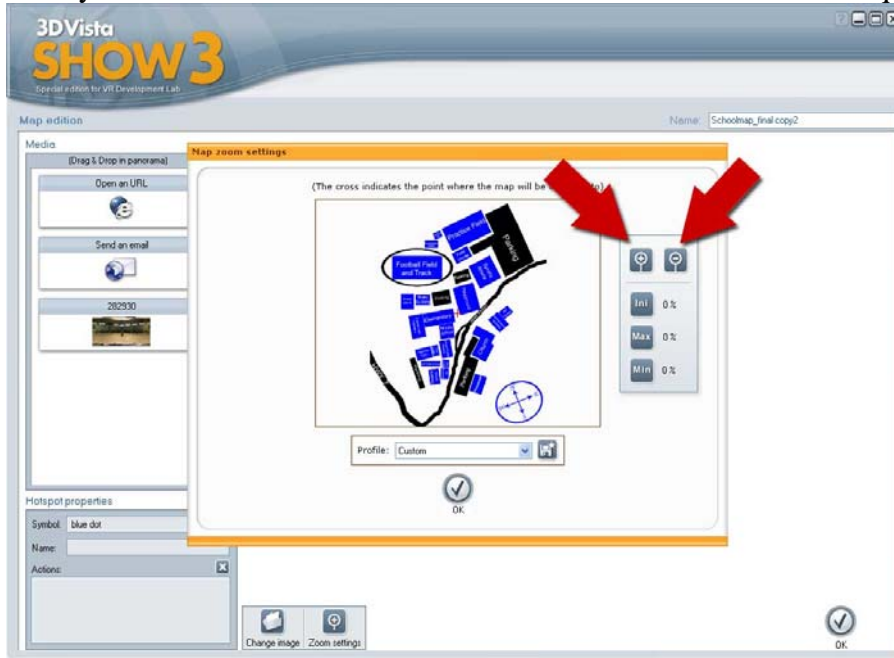
1. Double Click on your Floorplan image in you map section (this assumes that your map image is already uploaded)



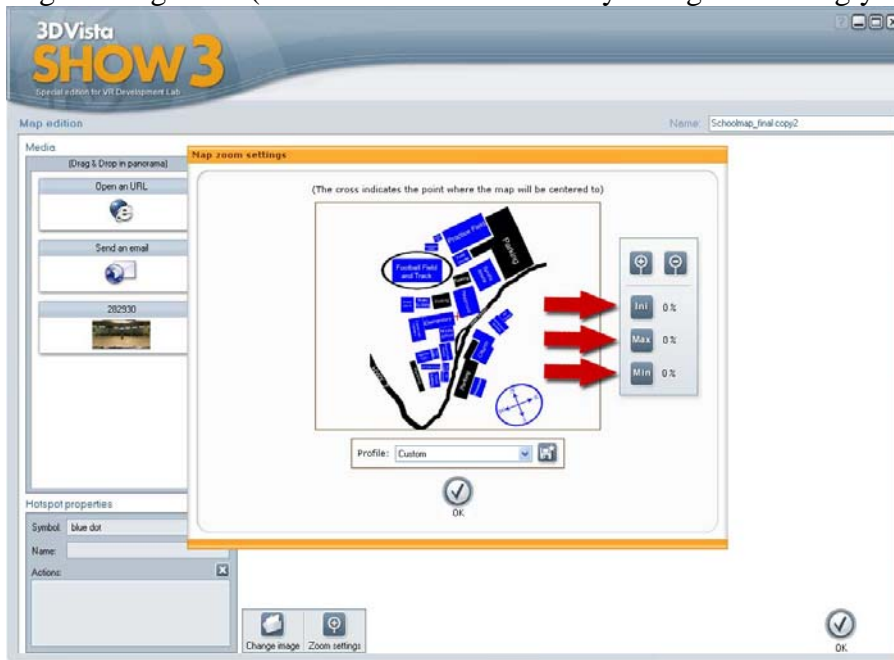
2. Click on zoom settings button



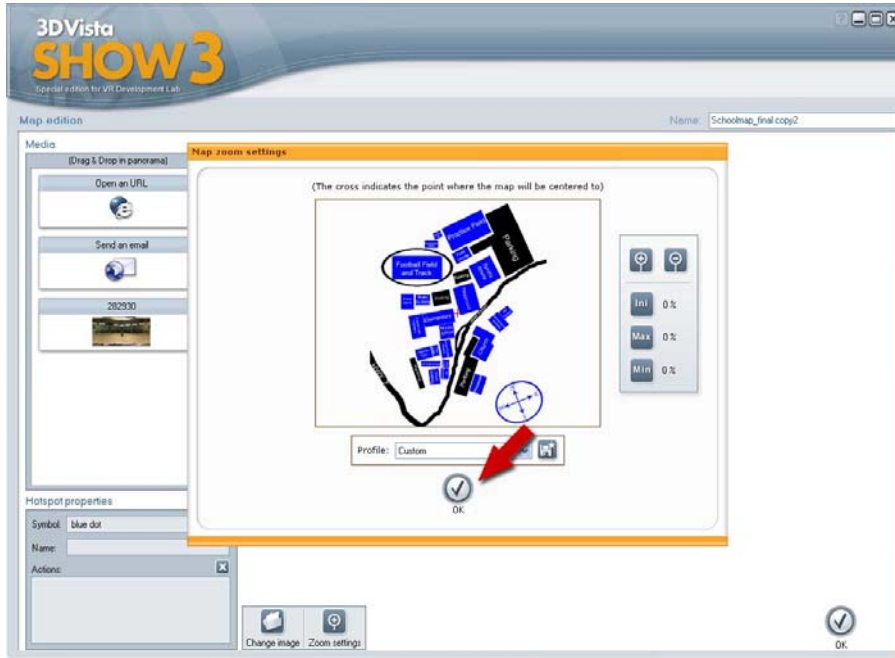
3. Play with the zoom in and out buttons until the desired level is acquired.



4. After satisfied with the size of map, click all three Ini, Max, and Min buttons once for the numbers next to them to change and for the program to keep the settings; otherwise it might disregard it. (the numbers will atomically change accordingly after pressing them)



5. Click ok.



6. Click ok again.

